

Year 2 - Plants

National curriculum objectives:

Observe and describe how seeds and bulbs grow into mature plants.

Ideas of how to do this whilst on lock down:

- If you have a garden, or when taking your daily walk, encourage your child to observe how the different types of plants that they see are growing as each day passes. Spring is a great time to watch them grow.
- Take a photo of the same plants each week and note the changes that occur.
- With your child, plant a variety of seeds and bulbs in your garden. If you don't have a garden then children can create their own window box, hanging basket or pot. You can even pot in an old wellington boot, a yoghurt pot or food tray or a plastic drinks bottle cut in half.
- Encourage your child to observe the seeds and bulbs, how are they different and how are they the same?
- Make predictions about the growth of the plants based upon their seed/bulb. Which will grow quickest, which will grow slowest? Why do you think that?
- Keep a diary/log to record their findings. Consider questions such as how do different plants grow and change over time?
- Share a story such as 'The Enormous Turnip'.

Find out and describe how plants need water, light and a suitable temperature to grow and stay healthy.

Children should learn about the requirements of plants for germination, growth and survival. Note: Seeds and bulbs need water to grow but most do not need light; seeds and bulbs have a store of food inside them. Light however helps them to thrive and stay healthy.

Ideas of how to do this whilst on lock down:

- Create an investigation using the same type of seed or bulb throughout (e.g. sunflower seeds). Plant each seed in a pot with some compost/soil.
 - Plant A should be watered, be given suitable light and in a temperate climate (window ledge in the sun or a nice warm, well-lit place indoors)
 - Plant B should be watered, be given suitable light but be somewhere cold (fridge wouldn't work as it has no light unless opened).
 - Plant C should be watered, be given no light, but be somewhere warm (e.g. an airing cupboard)
 - Plant D should not be watered, should be given light and be somewhere warm (placed in the same place as Plant A)
 - Observes what happens! Predict which will grow best and why. Revisit the prediction at the end. Was your child correct?
- Share a story such as 'Jack and the Beanstalk'.

How to Make a Mini nature reserve

wildlife
watch



1 Choose your site

Choose a safe place to put your window box – somewhere like an old bench or wall at an easy height for inspection.

2 Gather your materials

- window box
- a small log
- yoghurt pot
- some compost
- a rock

3 Fill the box with compost

Always use peat-free compost and save our precious peat bogs.

4 Add a few features

Dig in the yoghurt pot and add the small log and rock.

5 Leave!

6 Keep a diary

Record the changes you see. Make notes using guidebooks and take a photo every week.

7 Management

Remove out of control plants or cut them back with scissors.

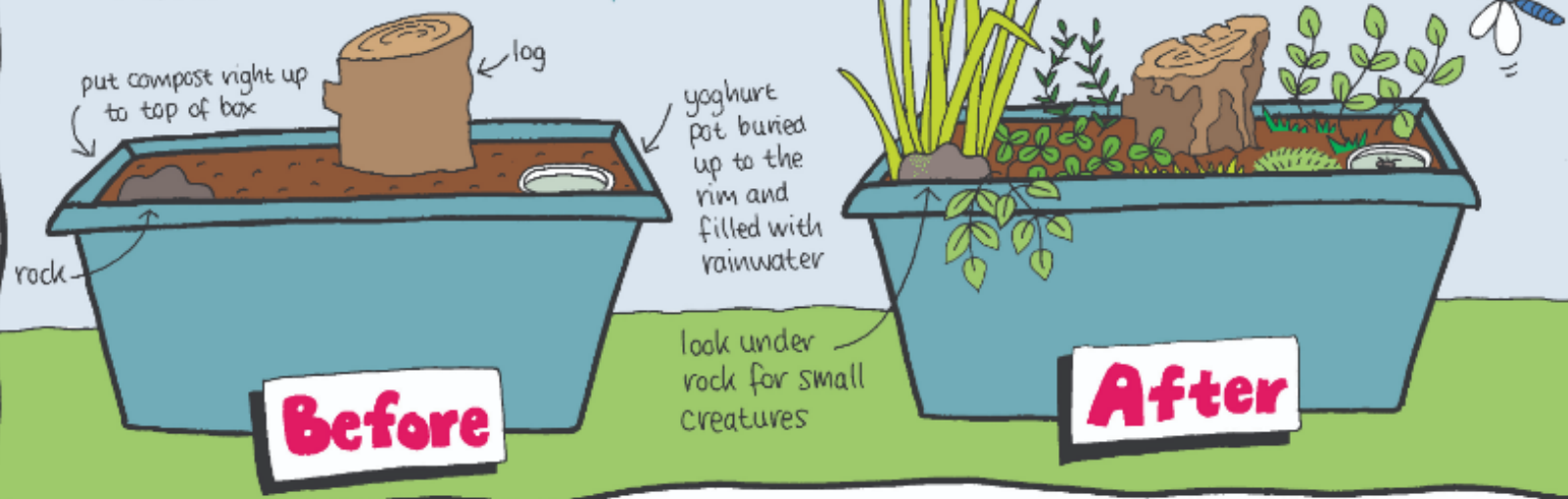


Illustration: Corinne Webb at www.wildlife-trusts.org.uk

Challenge:

Find out about Spike Island Nature reserve in Widnes.

What species can be found there?

Produce an information leaflet to encourage families to visit.

with thanks to patrick roper for original idea (windowboxwildlife.blogspot.com)